

## IAC-How to Check/Maintain

The Idle Air Control(IAC) is an electronically operated valve that controls the amount of air that bypasses the throttle plate in your Throttle Body.

If the IAC is not functioning properly, the ECM cannot properly make adjustments to the AFR and the engine will run poorly.

### Check Your IAC

- Allow your engine to fully cool.
- Turn your ignition switch to the 'ON' position.
- Place your ear close to the air-cleaner on the engine.
- Turn your ignition switch to the 'OFF' position.
- You should hear your IAC return to the 'Home' position.

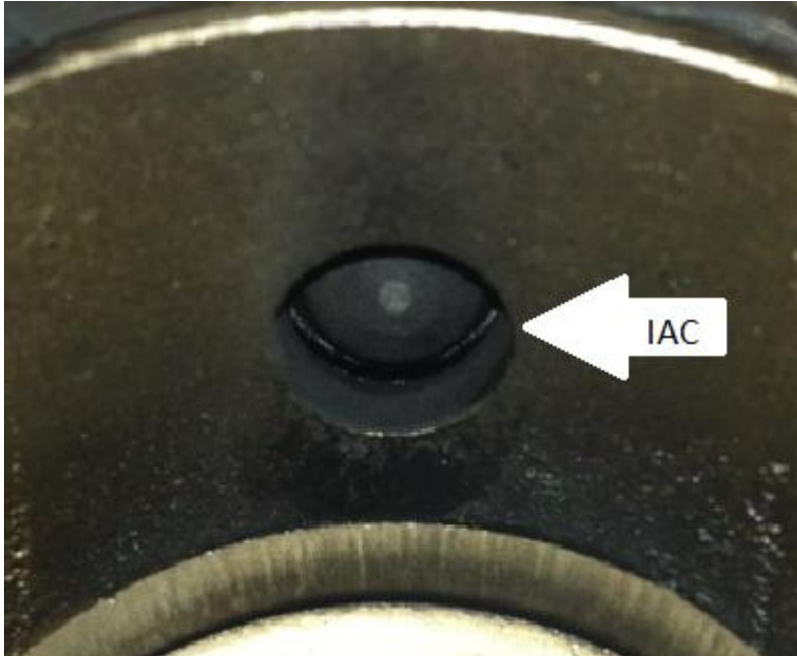
If you do not hear your IAC move, it is not operating.

If you can hear your IAC move, you may still have an IAC related issue. It is possible that the IAC is functioning, but not properly.

### To check this, complete the following( Must be 'LINKED' to the bike):

- Remove the bolt in the center of your air-cleaner cover and remove cover.
- Remove the 3 bolts in the center of your air-cleaner and remove the air-cleaner.

- You should now be able to see your throttle body.
- Located in the top of your throttle body is your IAC.  
*(PICTURED BELOW)*



- In your SmartLink Software, go to **ModuleConfiguration > Basic Settings**
- Now click **IAC HOME POSITION**.

ers	Idle Rpm	Dece
	1008 rpm	
	IAC Home Position	Decel
	90 steps	
ors	IAC Stop Target	Decel F
	8 steps	

- Write down current IAC Home Position setting for future review.

- Move bar to set IAC Home Position to **1**.

**IAC Home Position**

Idle air control default position (opening) during engine start.  
Typical settings are 70 - 100.  
Higher setting gives higher engine revolutions immediately AFTER engine start until ECM takes control.

1

OK Cancel

- Turn ignition key to 'ON' position for 5 seconds and then turn to 'OFF' position.
- Your IAC should now appear completely closed.
- Now follow the steps to go back to the IAC Home position page and adjust the setting to **90**.
- Turn ignition key to 'ON' position for 5 seconds and then turn to 'OFF' position.
- The IAC should now appear completely open.

- If you cannot see your IAC port clearly, you can place the end of a straw on the tip of the IAC plunger to monitor its movement.

**If your IAC appears to be operational, it may need to be cleaned.**

- Place a **Lint-Free** cloth directly below your IAC port to catch residue.
- Cycle the ignition key on and off 4-5 times while spraying small amounts of Throttle Body and Intake Cleaner directly into the port in short bursts.
- Wipe out any remaining residue with a clean **LINT-FREE** cloth.