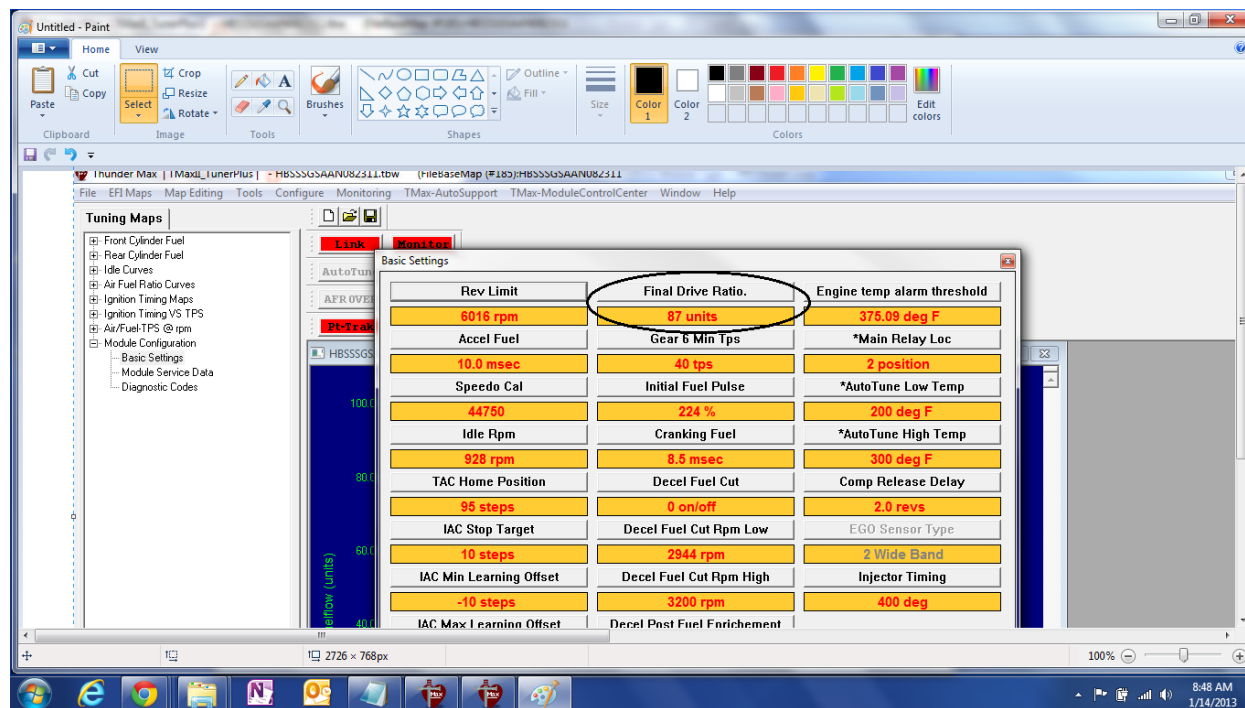


If your indicator light does not illuminate in 6th gear after a change has been made to the gearing or a change to the wheel size, simply lower the value in final drive ratio which is located under module configuration in basic settings.



Final Drive Ratio:

The default value for most all motorcycles is 87. Please note that this value is merely a compensation factor for the calibration needed to activate the light, not the actual Final Drive Ratio of the motorcycle. If your wheel size or gearing has been altered you may need to lower the value to illuminate the 6th gear indicator lamp.

Example- Some Dyna[®] Model motorcycles, require a value of 84 to illuminate the 6th gear light, a 2011 or later Trike with revised gearing requires a value of 78.