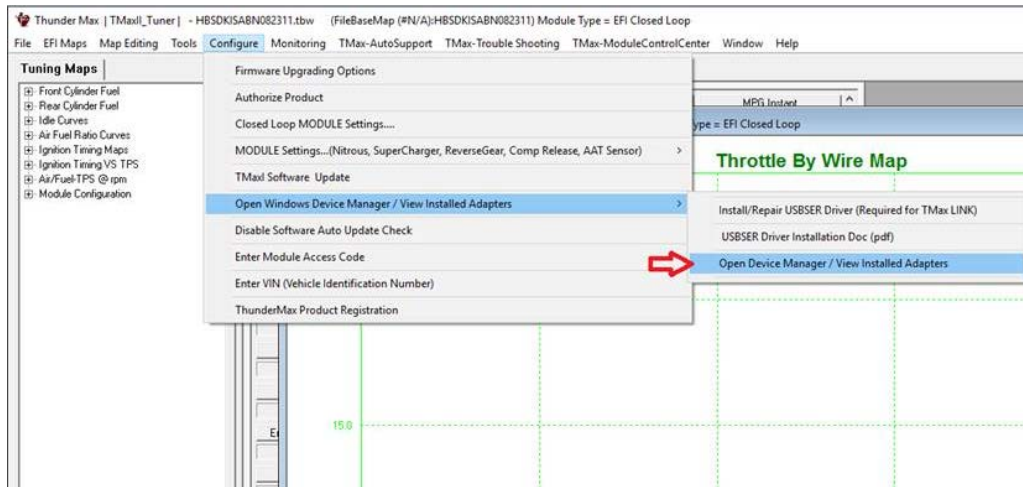


## Verify and Install the proper Tmax USBSER Driver.

IMPORTANT: If you are using Windows 10 all updates must be installed. (Windows 10 shown)

### Verify USBSER driver:

To determine if the driver is loaded, connect to the module and THEN turn the KEY/KILL switches to ON.  
Now, run the "Open Device Manager / View Installed Adapters" (SEE BELOW IMAGE)

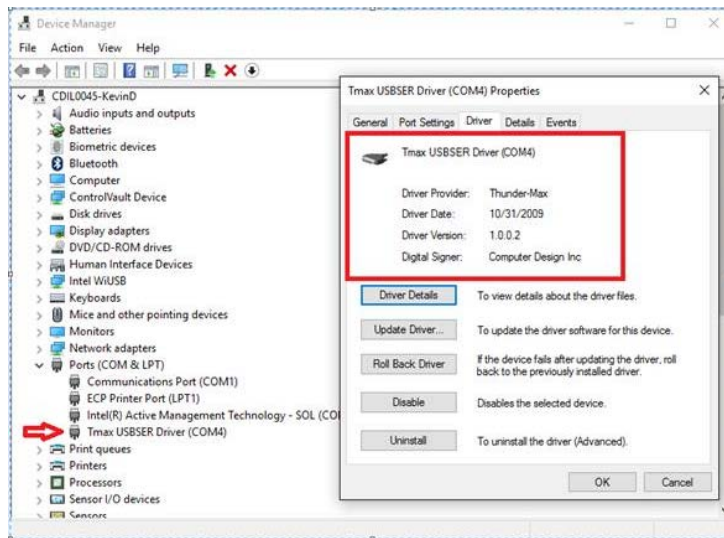


### View the current driver details:

DOUBLE-CLICK over Tmax USBSER Driver (COM4)

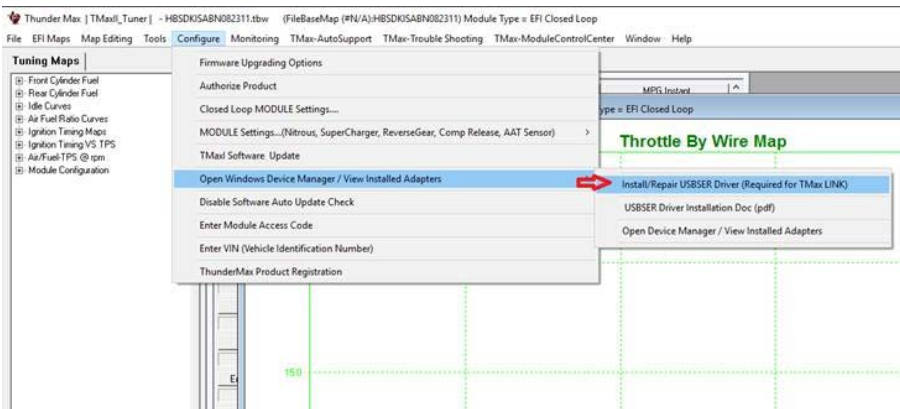
**NOTE: Your COM number may be different.**

The proper driver is marked/displayed below.



If you are having issues with TMax Driver...for Windows 10 or ANY other Windows Operating system...

1. Run the Install/Repair USBSER driver.



2. If the following Install Wizard dialog opens select REMOVE then follow all prompts....
3. THEN re-run the above Install/Repair command again.

